



PRODUCT GUIDE





TABLE OF CONTENTS

04	OVERVIEW
	Nitrogen & Phosphorus Cycle
	Carbon Cycle
	Agronomy 365™
07	PRODUCTS
	Meltdown
	Biocast MAX™
	Full Sun™
	AmiNo™
	BioBoost™
	Seed Treatment
	BW Prime™
	Humical™
	PiKSi Dust Plus
	SoyWORX™
	CornWORX™
	Powder Keg
	Boron 7%
25	PRODUCT PORTFOLIO

LEADERS IN THE FIELD

In the ever-evolving world of agriculture, keeping your farm profitable and sustainable is not just about working hard but working smart. Enter BW Fusion, a leader in the field of crop nutrition. With our innovative products and programs, we're redefining the way growers think about crop nutrition and soil health.

Our approach is straightforward: **People, Products, and Proof.** We commit to your farms' success, constantly innovate to provide superior products and rely on hard data to prove their effectiveness. Through rigorous product trials and soil analysis powered by **Agronomy 365™**, we've customized our products to address the precise nutritional needs of your crops at each growth stage.

Discover more about our custom, data-based, crop nutrition products, and let us drive your farm's success. We're here to help you increase farm profitability, partner with a single-source crop nutrition company, eliminate the guesswork, and experience the BW Fusion difference for yourself.

**We are BW Fusion,
LEADERS IN THE FIELD.**





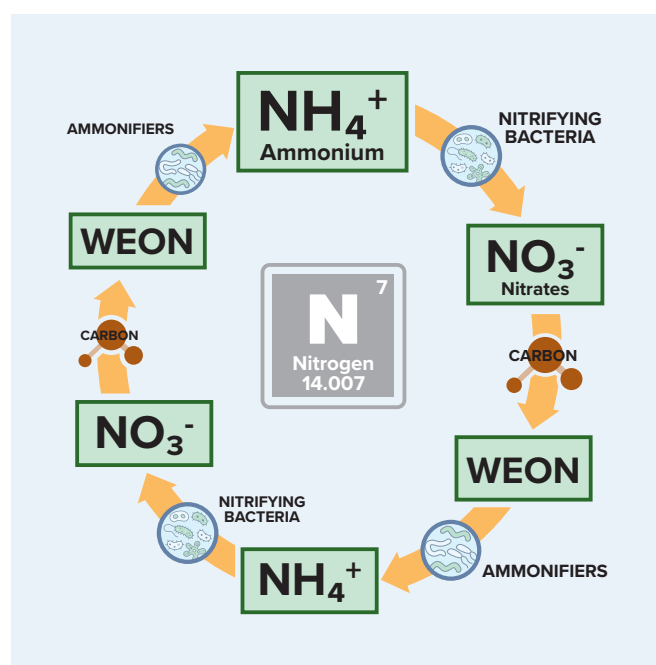
THE POWER OF NITROGEN AND PHOSPHORUS IN YOUR SOIL

Nitrogen and Phosphorus are critical determinants of plant growth and productivity.

Our goal is to establish a future of robust, sustainable growth by embracing soil resiliency and stronger plants. At the very core this means unlocking more phosphorus and maintaining sufficient nitrogen levels in your soil. Here's how microbes influence these nutrients:

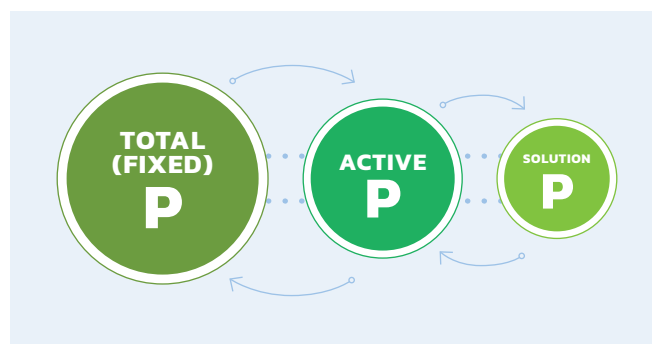
NITROGEN

Microbes are the key to taking organic nitrogen compounds in the soil from molecules that are just taking up space in the ground and turning them into essential nutrition for your growing plants.



PHOSPHORUS

There are large amounts of phosphorus in most soils across the corn belt, however, it's not easy for plants to access. Phosphorus is often present in mineral and organic forms, and slowly becomes plant-available over time as minerals weather or through microbial degradation. Supplemental P through fertilizer and manure applications is often necessary to prevent phosphorus deficiency in crops. Utilizing microbes create enzymes, which break down parts of the phosphorus and moves it more efficiently from pool to pool.



UNLOCKING THE POWER OF CARBON

Fueling the Phosphorus and Nitrogen Cycles

Carbon plays a pivotal role in driving the essential phosphorus and nitrogen cycles. Without carbon, these vital elements become inaccessible. At BW Fusion, we prioritize amplifying organic matter and cultivating nutrient-rich food to nourish microbes. We are equipping growers with a deep understanding of their carbon resources and empowering them to optimize these invaluable assets to increase profitability.

Here's how microbes influence these nutrients:

CARBON CYCLE

C⁶
Carbon
12.0107

CYCLE STARTS OVER

CO₂ RELEASE

Catch/Release
Through
Photosynthesis



MICROBES RELEASE
SOME CO₂



REPLENISHES
WEOC &
STIMULATES
MICROBES

MICROBIAL
ACTIVITY



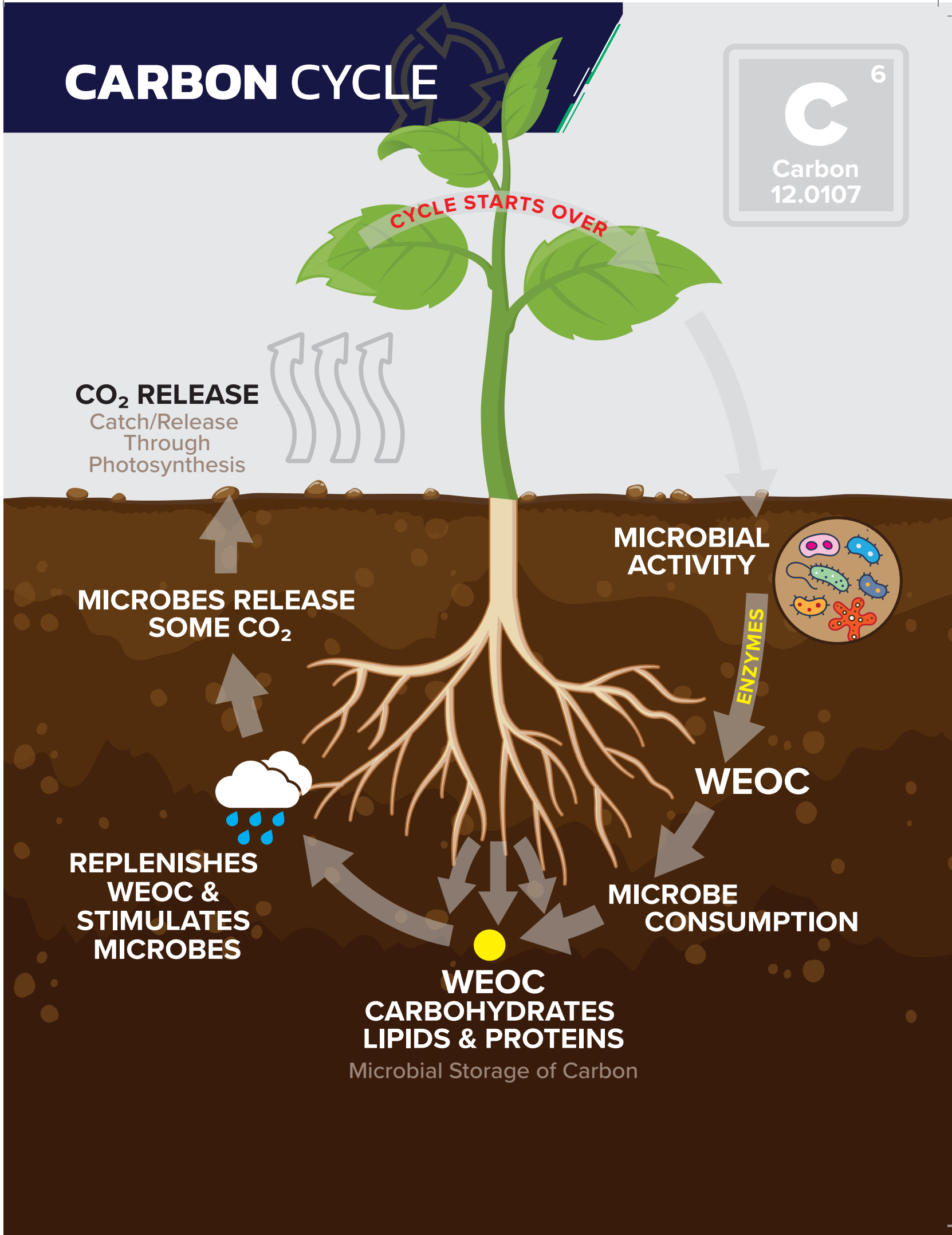
ENZYMES

WEOC

MICROBE
CONSUMPTION

WEOC
CARBOHYDRATES
LIPIDS & PROTEINS

Microbial Storage of Carbon



THE POWER OF BIOLOGY FOR YOUR BOTTOM LINE

Know your current nutrient levels and what your crops really need, then define your crop nutrition strategy.

Unlocking the potential of your soil and ensuring nutrient efficiency becomes seamless with Agronomy 365, eliminating guesswork and maximizing your profitability.

Agronomy 365's in-season soil and tissue sampling to get real-time data on nitrogen levels throughout your fields to help guide your crop nutrition decisions. You can make guesses by looking closely at the crops in your fields, but when it comes to

inputs, your dollar goes a lot further when you're **focusing on the nutrients your crop truly needs**, not the nutrients you think your crop needs.

Forge a path toward robust, sustainable growth by upgrading from your conventional program to a data-backed agronomy program, prioritizing soil resiliency and fostering the development of stronger, healthier plants.



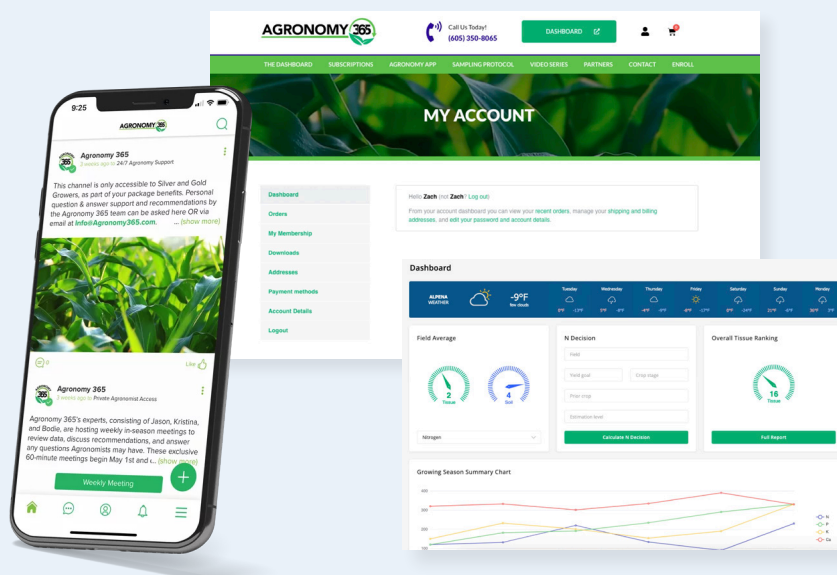
Q&A

Why is soil resiliency important?

Soil resilience ensures immediate and long-term soil quality by building and storing carbon in the soil system, allowing our microbial teams to operate and function at peak levels. Investing in resilient soils now safeguards growers against potentially devastating future issues, making it an integral priority for sustainability efforts.

How do we know they will work?

Our in-house agronomy and microbiology team developed these programs by listening to farmers and analyzing data on thousands of acres over the past ten years to ensure our programs can directly target the grower's nutrient needs for maximum soil resiliency.



AGRONOMY 365™

Manage your field's performance with in-depth reporting and leading industry insights all from the palm of your hand.

Agronomy 365™ is our powerful soil analysis app that helps farmers maximize crop yields and nutrient availability. By combining data-driven soil testing with comprehensive nutrient mapping, Agronomy 365 helps farmers identify and resolve deficiencies in the soil to ensure optimal growth for crops.

With the Agronomy 365™ app you'll have everything you need to make profitable decisions for your fields:

- ✓ **Discover the limitations that could be stealing profit from your operation.**
- ✓ **All your field data in one place. Access to expert insights for the growing season.**
- ✓ **Gather Data. Establish Goals. Make better crop nutrient decisions.**



AGRONOMY 365™
DOWNLOAD OUR APP TODAY!



Crop residue digester.

ADDITIONAL INFORMATION



APPLICATION

Broadcast



RATE

32 oz. per acre



TIMING

Post Harvest, Pre Planting,
Pre/Post Emergence



PRODUCT TIPS

Easily added to your existing fall or spring burndown. MeltDown is a complete stubble digester product that not only contains a team of microbes but also gives them the food source to get to work.

Push your soil to its fullest potential with Meltdown™! Meltdown™ helps restore the soil's vitality with its proprietary microbial team that digests and transforms last season's idle crop stubble into nutrient resources.

FROM THE FIELD



"BW Fusion's innovative team of microbes breaks down crop residue naturally, which returns nutrients to soil faster and improves soil health. With Meltdown you can optimize your farm for increased yield potential while reclaiming your investment dollars!"

JASON SCHLEY, President of Agronomy



ADDITIONAL INFORMATION



APPLICATION

Broadcast



RATE

32 oz. per acre



TIMING

Preplant
Sidedress or Y-drop



PRODUCT TIPS

Target applications preplant to supercharge
nutrient release from the soil

Biocast MAX™ is a powerhouse that is powered by Environoc® to boost soil fertility and cycling. Among its powerful components are carbon cyclers that make nutrients more readily available for use by plants, ammonifying microbes and phosphorus solubilizers that help unlock crucial P elements. New formulation has been proved to reduce nitrogen, phosphorus and potassium applications.

FROM THE FIELD



"Biocast MAX combines the powerful Environoc 401 and 501 technologies with an innovative organic complex that delivers unbeatable results, providing unparalleled benefits to crops. With Biocast MAX, growers will get increased ROI, healthier plants, and an overall boost to the quality of their crops. Trust me, this is a game-changer for the industry, and I'm thrilled to be a part of it."

SEAN NETTLETON, Technical Agronomist





Give your plants the
nutrients they need to
grow with Full Sun™.

ADDITIONAL INFORMATION



APPLICATION

Foliar



RATE

64 oz. per acre



TIMING

Corn: V3-VT (V3-V6 ideal timing for initial application)
Soybeans: V6-R3



PRODUCT TIPS

- From product efficacy to ease of application, it is important to get your pH levels right – optimal solution pH range is 4.5-5.2.
- Applications during the reproductive stages will increase plant photosynthates driving more energy to increase kernel density during grain fill.
- Avoid application during high temperature and periods of prolonged stress.
- Avoid pairing with AmiNo and other plant stimulants.

Full Sun provides plants with the key nutrients they need to optimize photosynthesis. Making the plant more efficient at producing its own food, sugar. It's critical for the plant to have enough sugar to keep the functions of the plant operating optimally and still have enough for grain fill. With Full Sun you can achieve a more efficient plant/sugar machine. Full sun was recently tested on both corn and soybeans with a win rate of over 80%.

FROM THE FIELD



"As a Technical Agronomist, I know that building up plant reserves before the reproductive stage is essential. And why settle for just essential when you can achieve maximum potential? That's where Full Sun comes in. Its nutrients not only nourish your plants but also equip them to harness sunlight to grow larger and stronger. With Full Sun, you can finally achieve the full potential of your crops with efficiency and effectiveness. Don't settle for less. Choose Full Sun."

DEVIN BAKER, Technical Agronomist





**Improve crop health and
production during and after
stress events.**

ADDITIONAL INFORMATION



APPLICATION

In-Furrow or 2x2
Soil Applied (Broadcast, Y-drop, Sidedress)
Foliar from Vegetative to Reproductive



RATE

8-40 oz. per acre



TIMING

Pre-Plant-R2



PRODUCT TIPS

- DO NOT pair with Full Sun
- Great when paired with BW-Respite for stress mitigation

AmiNo™ provides an efficient solution to reduce the release of carbon back into our atmosphere. By utilizing amino acids instead of nitrates, plants can create more proteins with less energy consumption and soil nitrogen application — allowing for a dramatic increase in carbon being stored within soils rather than released! Additionally, this product serves as an aid to plant stress mitigation by aiding the plant in the creation of sugars needed to help protect yield.

FROM THE FIELD



"AmiNo is a game-changer when it comes to promoting eco-friendly and sustainable agriculture practices. This innovative approach not only enables efficient soil nitrogen reduction but also promotes carbon storage. The result? Crops that are able to produce vital sugars and retain yields even in the face of stress. In short, AmiNo is the key to unlocking unparalleled agricultural success."

MASON CLAUDE, Technical Agronomist



ADDITIONAL PRODUCTS

02



BIOBOOST™

Powered by 

NEW FOR 2024

The Ultimate Planter Box Solution



BioBoost™ is a microbial-rich seed lubrication that revolutionizes plant health and innovation in sustainable farming. Our proprietary formula strengthens the symbiotic relationship between microbes and plants, helping them grow healthy from germination onward.

Capture more of the genetic potential within each seed and take back some control of the uncontrollable environment.

ADDITIONAL INFORMATION

SUGGESTED CROPS	Corn: BioBoost™ CORN, Soybean: BioBoost™ SOY
APPLICATION	On seed application
RATE	0.5 oz./unit of seed (Corn: 80K kernels, Soybeans 140K seeds)
TIMING	Apply to seed at time of planting as a seed lubricant. (do not add Graphite or Talc)
PRODUCT TIPS	<p>For Bulk Fill Planters, spread one container of BioBoost on the seed in the top of the pro box prior to transfer into the planter or seed tender.</p> <p>For Individual seed box per row planters, add unit of seed to box, spread one-half ounce BioBoost on top of seed and stir seed until BioBoost is evenly applied to seed.</p>

"A unique aspect of this product is its ability to mitigate abiotic stress imposed by adverse temperature and moisture during germination and emergence as well as late during the reproduction stages due to the endophyte activity within the plant."

GREG MCCLURE, *President of Research & Development*

SEED TREATMENT

Powered by 

A strong start for strong plants.



BW Seed Treatment is a diverse biological team of living organisms that improves germination and gets your plants off to a healthy start. Additional benefits include nodulating strains of bacteria that form nitrogen producing nodules on the roots of legume crops like soybeans.

ADDITIONAL INFORMATION

SUGGESTED CROPS	All Row Crops
APPLICATION	On seed application
RATE	1.5-2 oz. per 50 LB bag of seed; 3-4 oz. per CWT
TIMING	Seed Treatment
PRODUCT TIPS	BW Seed Treatment proved its mettle in cold, wet conditions where other treatments failed; not only did it promote germination but also resulted in robust root development.
EXPECTATIONS	Enhance germination promotes the emergence and stand optimization

"It's a great option if you don't have in furrow capabilities to get the 401 biology out there and increase germination"

RYAN CHALFANT, Customer, Chalfant Family Farms

BW PRIME™

Powered by 

Carbon Solubilization plus soluble Calcium.



Unleash the power of your soil with BW Prime™. This biostimulating blend is packed with key food sources and microbial strains, priming your land to maximize mineralization for a competitive edge over untreated acres. It also boosts calcium levels and helps solubilize carbon – perfect for improving soil resilience!

ADDITIONAL INFORMATION

SUGGESTED CROPS	Corn, Soybean, Wheat, and Cotton
APPLICATION	Water quality/pH: 6.2 pH
RATE	2 gallons per acre
TIMING	Broadcast
MIXING INFORMATION	Do not apply with Glyphosate, Sulfur, Phosphorus, 2-4d amine
PRODUCT TIPS	Meant for spring applications; pre-plant and pre-emergence
EXPECTATIONS	By applying Prime, you are applying food sources to feed native microbes as well as applying our diverse microbial strains to kickstart the mineralization process to gain an advantage over untreated acres.

“BW Prime™ is an easy-to-use premix that allows you to get our 501 microbial teams out in combination with a source of calcium. It is a great way to kick off your microbial activity for the season.”

MASON CLAUDE, Technical Agronomist

HUMICAL™

Give your plants the missing ingredient they need to be more productive.



HumiCal™ is an essential product that keeps your soil healthy and rich in nutrients. Calcium is an essential nutrient for proper soil structure, plant cell wall development, and crop production, and when deficient, these aspects of plant health will suffer. HumiCal™ is a bold step towards ensuring your plants have the calcium they need to reach their full potential.

ADDITIONAL INFORMATION

SUGGESTED CROPS	All Crops
APPLICATION	HumiCal™ is premixed and requires no additional water.
RATE	1-3 gallons per acre
TIMING	Can be applied pre-plant, at planting, and or in-season with coulters and or Y-drop applications.
MIXING INFORMATION	<div><div>></div> Easy to use, with no need for additional additives.</div> <div><div>></div> Does not mix with sulfur, phosphorus, boron or any other sulfate-based micronutrients. Do not use HumiCal™ with Sulfur, Glyphosate or 2.4-D Amine.</div>
PRODUCT TIPS	HumiCal™ is water-soluble, meaning it can be applied directly to the soil without needing to go through a biological breakdown process.
EXPECTATIONS	<div><div>></div> Immediately available to the soil and growing plants.</div> <div><div>></div> Helps improve nutrient uptake in plants.</div> <div><div>></div> Improves crop quality and productivity.</div>

"HumiCal™ has been a game changer in improving nutrient uptake leading to increased yields and better crop quality. It's the perfect choice for growers who want the best results from their crops."

SEAN NETTLETON, Technical Agronomist

PIKSI DUST PLUS™

Best-in-class plant stress reducer.



BW-PiKSi Dust Plus™ is a best-in-class plant stress reducer - using a beneficial potassium silica product to build robust cellular structures in any crop. After years of studies and farm trials, BW Fusion recognized the facilitating capacity of potassium and calcium in supporting vital nutrient uptake. This one-of-a-kind product brings new solutions to old challenges — facilitating healthy growth in depleted soils and reducing the stresses of extreme weather events that suppress yields.

ADDITIONAL INFORMATION

SUGGESTED CROPS	Soybean
APPLICATION	V3 Application
RATE	1.8 grams per 1 gallon of water. Must use a minimum rate of 3 gallons per acre for full coverage, but do not exceed 20 gallons per acre.
TIMING	Foliar
MIXING INFORMATION	Use as foliar spray with fertilizer/chemical inputs in any standard crop management program. Should NOT be tank mixed with nitrate-based fertilizers.
PRODUCT TIPS	Apply between 7-14 days before the typical onset of disease.
EXPECTATIONS	Increases photosynthesis which helps mitigate salt stress. Better root growth and water efficiency.

"I was able to secure 2nd place in the North Carolina Soybean Association Non-Irrigated Division with my new BW Fusion products."

WILL COX, Customer

SOYWORX™

Dedicated and focused on maximizing soybean ROI.



Set your soybeans up for success! SoyWORX™ provides the nutrients needed at early stages of a soybean plants life to give the optimal chance of being productive, healthy, and strong both above and below ground.

Magnesium, calcium, and phosphorus are critical to soybeans. SoyWORX™ provides the right amount of these nutrients to help provide maximum root structure that will produce a stacked plant with more lateral branching. This all leads to more pods per acre and increased yield.

ADDITIONAL INFORMATION

SUGGESTED CROPS	Soybean
APPLICATION	Soil amendment. Easy to use, with no need for additional additives, SoyWORX™ is a true, complete starter for soybeans.
RATE	3 gallons per acre
TIMING	In-furrow
MIXING INFORMATION	Designed to be a stand-alone. Do not mix with phosphorus, Boron or sulfur containing products.
PRODUCT TIPS	In-furrow only.
EXPECTATIONS	<ul style="list-style-type: none">➤ Increase root structure for a more vertical root with thicker diameter.➤ Promotes earlier nodulations.➤ Trace nutrients support hormonal growth and early season sun capture.➤ Ensures more lateral branching in a shorter, squattier plant.➤ Multi-action carbon is specifically designed to cultivate the Biological network.

"An innovative soybean starter that allows soybean plants to develop larger roots more quickly. It also will allow the soybean plant to create an ideal structure by promoting branching. It is a perfect in-season starting point for a grower striving for high yields."

BODIE KITCHEL, *President of Strategic Distribution*

CORNWORX™

Maximize your corn crop ROI.



CornWORX™ is a powerful blend of nutrients and minerals, specifically formulated to provide corn plants with the building blocks needed for optimized growth. Delivering essential amino acids directly to the plant helps create stronger roots/microbial associations and solubilization of vital nutrients.

ADDITIONAL INFORMATION

SUGGESTED CROPS	Corn
APPLICATION	Water quality/pH: 6.2-6.9 final solution
RATE	64 ounces per acre
TIMING	In-furrow or 2x2
MIXING INFORMATION	<ul style="list-style-type: none"> ➤ Can mix with BW-Synergy™, Melted Manure™, and other in-furrow fertilizers. ➤ Jar test. ➤ Easy to use, with no need for additional additives, CornWORX™ is a true, complete starter for corn!
PRODUCT TIPS	When combined with Melted Manure™ or BW-Synergy™, you can expect outstanding results. Set your standards high; manage expectations to ensure success!
EXPECTATIONS	<ul style="list-style-type: none"> ➤ Advanced root system. ➤ Improved early season vigor and plant health. ➤ Better overall plant stand.

"CornWORX™ is a great addition to your in-furrow fertilizer application. It provides your corn crop with the opportunity to have stronger early-season vigor and better roots which will lead to a better, more uniform stand. This is done by providing components that traditional starters leave out."

JOSH MESSER, Technical Agronomist

POWDER KEG™

Protect crops from the stresses of drought or heat.



Power up your harvest and ensure ultimate growth with Powder Keg™. This advanced blend provides essential nutrients, vitamins, and amino acids to give corn and soybean seeds the best chance of success even when faced with hot or drought conditions. Conquer abiotic stressors – supercharge your crop with Powder Keg™!

ADDITIONAL INFORMATION

SUGGESTED CROPS	Corn and Soybean
APPLICATION	Seed Treatment
TIMING	Seed Treatment
MIXING INFORMATION	<div><div>> For corn, dissolve in 200 oz. of water and apply directly to seed as a coating at 2.2 oz. of solution/CWT.</div><div>> For soybean, dissolve in 10 gal. of water and apply directly to seed as a coating at 4 oz. of solution/CWT</div></div>
PRODUCT TIPS	Use a separate pass early in the season to protect growing crops and some soil exposure. Fits well after herbicide passes.
EXPECTATIONS	Abiotic stress relief. Helps increase your crop quality and yield while reducing the amount of fertilizer needed to achieve a more profitable farm.

“Powder Keg has made a big difference in helping us protect crops under abiotic stress like drought or heat. We don’t have to stress because we don’t have enough water.”

MASON CLAUDE, Technical Agronomist

BW-BORON 7%

Enhance crop growth under adverse soil conditions.



BW-Boron 7% is a blend of boron and low-concentrate molybdenum, formulated to provide consistent crop growth under adverse soil conditions. BW-Boron 7% is essential to transporting sugars throughout plant systems and supports critical aspects of building strong cell walls, disease resistance, stem branching, nodulations in legume crops, flower development, and pollination. Boron is a known element that supports seed development in most crops, with most on-farm trials showing significant yield increases across growing cycles.

ADDITIONAL INFORMATION

SUGGESTED CROPS	Soybean
APPLICATION	Pre-Plant / Post Emergence
RATE	16-128 oz. per acre
TIMING	V3
MIXING INFORMATION	Easy to apply. Mixes with everything. Early application with Biocast MAX™ and Full Sun™. V10-V12 with copier or zinc glycine and fungicide. Standalone as needed.
PRODUCT TIPS	BW-Boron 7% increases the number of crop nodes when applied before vegetative cycle 5 (V5) in soybean production.
EXPECTATIONS	<ul style="list-style-type: none"> ➤ Enhance plant cell formation, stem branching, flower development, and pollination. ➤ Enhance disease resistance. ➤ Increase crop yields.

"Boron is essential for the transportation of sugars. When applied before V5, this product will increase plant nodes in soybeans. BW-Boron 7% can be used across all soil types."

BUCK BREAZEALE, Technical Agronomist

PRODUCT PORTFOLIO

04



PRODUCT PORTFOLIO

Below is a comprehensive list of all products BW Fusion offers.

CORE PRODUCTS	APPLICATION	RATE
BW-Meltdown	Broadcast	32 oz/acre
BW-Biocast Max	Foliar/Broadcast	32 oz/acre
BW-Full Sun	Foliar	64 oz/acre
BW-AmiNo	In Furrow/Broadcast/Foliar	8-40 oz/acre
BW-BioBoost	Seed Treatment	0.5 oz/unit of seed
BW-Seed Treatment	Seed Treatment	1.5-2 oz/50 lb
BW-HumiCal	Soil Apply	1-3 gal/acre
BW-Prime	Pre/Post Plant	2 gal/acre
BW-Biocast	Pre/Post Plant	32 oz/acre
BW-HF 12%	In Furrow, Foliar	See Label
BW-CornWorX	In Furrow	64 oz/acre
BW-SoyWorX	In Furrow	3 gal/acre
BW-WheatWorX	In Furrow	3 gal/acre
BW-Powder Keg Corn - 570g jar	Seed Treatment	See Label
BW-Powder Keg Soybeans - 480g jar	Seed Treatment	See Label
BW-Powder Keg Small Grains - 459g jar	Seed Treatment	See Label
BW-PiKSi Dust Plus - 1500g jar	Foliar	See Label
BW-Boron 7%	PP, 2x2, SD, YD	See Label
BW-Respite	Foliar	2-4 oz/acre
BW-Ntrust	Sidedress	48-64 oz/acre
BW-Ntune	Sidedress	48-64 oz/acre
BW-K Ace		1-4 qt/acre
BW-Synergy	In Furrow	128 oz/acre

ENVIRONOC PRODUCTS	APPLICATION	RATE
Environoc® 101	As Needed	See Label
Environoc® 201	As Needed	See Label
Environoc® 301	As Needed	See Label
Environoc® 401 Microbial Biostimulant	In Furrow / 2 x 2	16 oz/acre
Environoc® 501 Biological Stubble Digester	Broadcast	32 oz/acre





INTERESTED IN BECOMING A BW FUSION DEALER?

Joining the BW Fusion dealer network is a great opportunity to demonstrate your commitment to improving crop nutrition, profitability, and farm productivity.

Our dealer partners are essential to our mission of providing growers with the next generation of nutrient-efficiency solutions. They help us deliver leading-edge products, programs, and services that enable growers to manage their inputs and maximize results in today's competitive markets.

Becoming a BW Fusion dealer enables you to work closely with successful agronomists, growers, and business managers, ensuring you get help with critical decisions while staying ahead of the curve.



**JOIN US TODAY AND UNLOCK THE FUTURE OF
CROP NUTRITION FOR YOUR BUSINESS!**



Discover more about our custom, data-based crop nutrition program, and let us drive your farm's success.

FORT WAYNE · FONDA · LOGANSPOUR · KANSAS

BW-FUSION.COM

info@bw-fusion.com

(888) 429-3874

